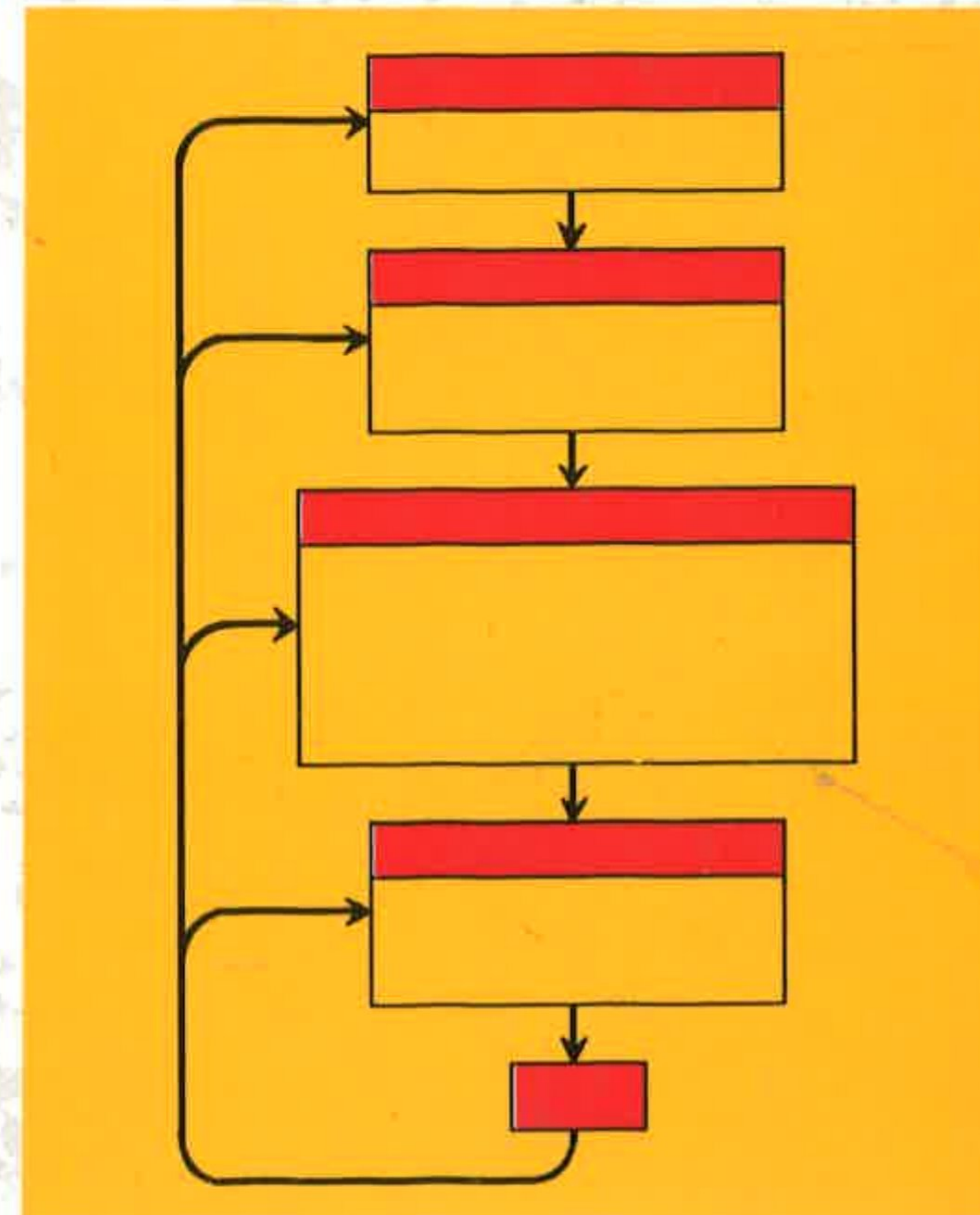


FIFTH EDITION

# Production and Operations Management

Concepts, Models, and Behavior



EVERETT E. ADAM, Jr.  
RONALD J. EBERT





# BRIEF CONTENTS

<b>P A R T O N E</b>		<b>Managing Operations</b>	<b>1</b>
CHAPTER ONE	Operations Management	2	
CHAPTER TWO	Operations Strategies for Competitive Advantage	38	
<b>P A R T T W O</b>		<b>Planning (Designing) the Conversion System</b>	<b>75</b>
CHAPTER THREE	Forecasting	76	
CHAPTER FOUR	Designing Products, Services, and Processes	118	
CHAPTER FIVE	Operations Capacity	162	
CHAPTER SIX	Locating Production and Service Facilities	211	
CHAPTER SEVEN	Layout Planning	251	
<b>P A R T T H R E E</b>		<b>Organizing the Conversion System</b>	<b>289</b>
CHAPTER EIGHT	Job Design, Production and Operations Standards, and Work Measurement	290	
CHAPTER NINE	Project Management	332	
<b>P A R T F O U R</b>		<b>Scheduling Production and Service Systems</b>	<b>371</b>
CHAPTER TEN	Scheduling Systems and Aggregate Planning for Production and Services	372	
CHAPTER ELEVEN	Operations Scheduling	409	
<b>P A R T F I V E</b>		<b>Controlling the Conversion System</b>	<b>449</b>
CHAPTER TWELVE	Inventory Control Fundamentals	450	
CHAPTER THIRTEEN	Inventory Control Applications	486	
CHAPTER FOURTEEN	Material Requirements Planning	521	



BRIEF CONTENTS

<hr/>	
S I X	Managing for World Class Competition 561
	Japanese Contributions to World Class Manufacturing 562
	Managing for Quality 594
	Quality Analysis and Control 628
<hr/>	
S E V E N	Dynamics of Operations Management 671
	The Conversion Process in Change 672

# CONTENTS

Preface xvii

P A R T O N E Managing Operations 1

CHAPTER ONE	<b>Operations Management</b>	2
	The Operations Function in Organizations	4
	Historical Evolution of Production and Operations Management	8
	A Systems View of Operations: Defining the Subsystem	9
	Managing the Operations Subsystem	10
	Operations Managers Seek Employee Participation	14
	A Framework for Managing Operations	14
	The Strategic Role of Operations	17
	Trends in Operations Management	21
	Production and Operations Management Careers	22
	Managing Operations in Socialist Cultures	24

Contemporary Operations Management Topics	26
Summary	27
<b>Supplement to Chapter 1</b>	31
The Role of Models in Operations Management	31
Classifying Problems	32



CHAPTER TWO	<b>Operations Strategies for Competitive Advantage</b>	38
	Strategic Planning	40
	The <i>Process</i> and <i>Content</i> of Operations Strategies	44
	Productivity and Quality	46
	TRW Translates People into Productivity Improvement	50

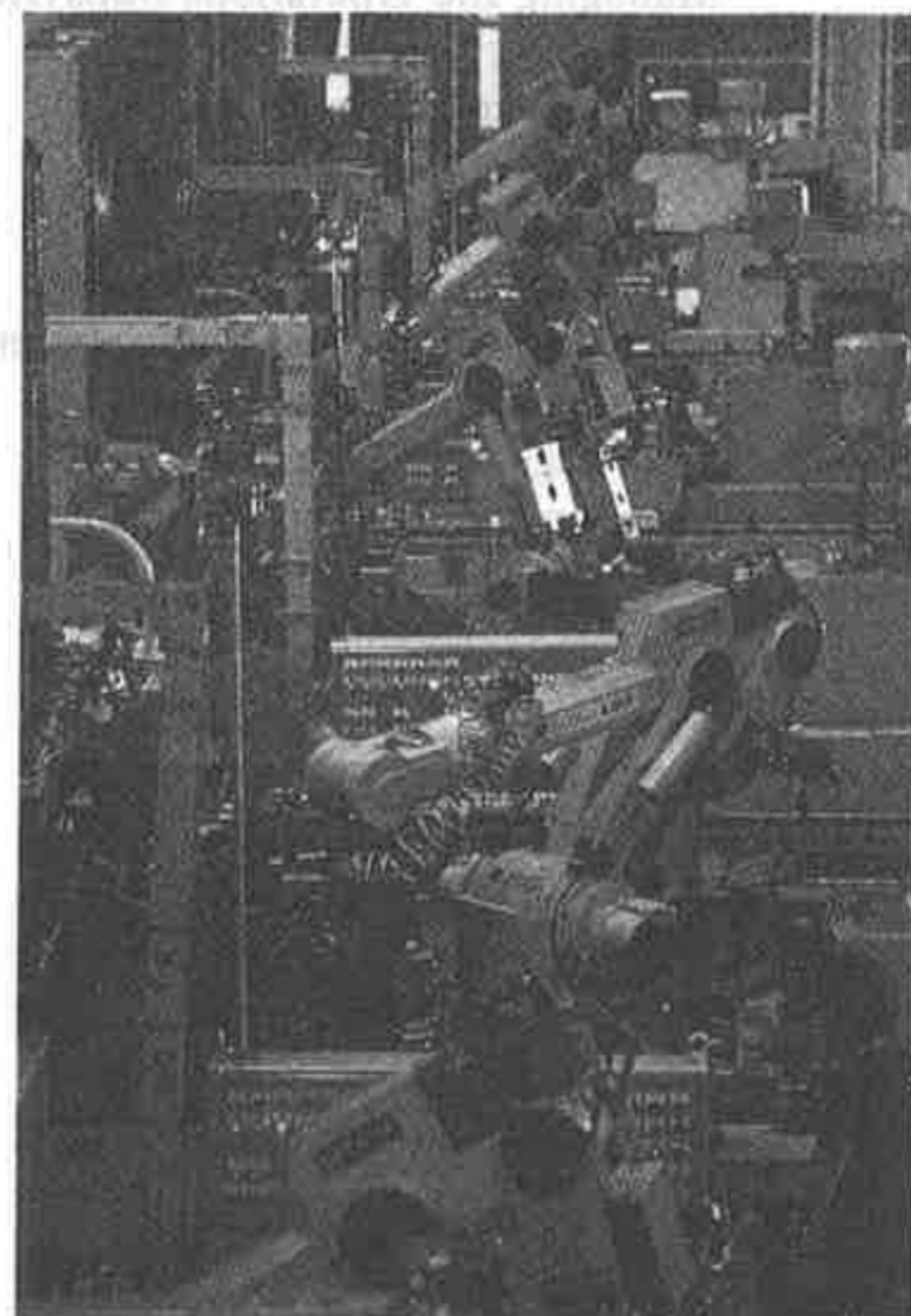


Technology and Mechanization	52	Summary	60
Global Operations		<b>Supplement to Chapter 2</b>	65
Management	53	Financial and Economic Analyses in	
Operations—An International		Operations	65
Development with Far-Reaching			
Impact for U.S. Manufacturing	58		
The Competitive Challenge			
Operations Management	60		

**CHAPTER SIX** Planning (Designing) the Conversion System 75

Forecasting	76	Keeping an Eye on the "Systems	
Management in Operations	77	Side" of Expansion	172
Computer Assists in		Model Selection	181
Forecasting	86	Summary	181
Forecasting Models for		<b>Supplement to Chapter 5</b>	192
Operations	88	Linear Programming: The Graphical	
Manufacturers Apply Forecasting in		and Simplex Methods	192
Operations	98		
Use of the Forecasting Model	102		
Key Dimensions of			
Forecasting	103		
	105		

Designing Products, Services,			
and Processes	118		
Product Design (Product			
Development)	119		
Designing New Products and			
Services Is a Risky Business	124		
Integrating Process Technology	130		
Manufacturing Systems			
	133		
Impact of Computer-			
Integrated Manufacturing (CIM)	136		
Services and Service			
Operations	142		
Related Services Are a			
Key Area for Operations	144		
	148		
Supplement to Chapter 4	154		
Learning Curves	154		



<b>CHAPTER SIX</b>	<b>Locating Production and Service</b>		
	<b>Facilities</b>	<b>211</b>	
Planning Environment	163	Need for Facility Location Planning	212
Float: Capacity,		Paper, Pens, and Staples Need to be	
Location, Better Service, and	166	at the Right Location	216
Planning Modeling	171	General Procedures for Facility	
		Location Planning	218

Facility Location Models	219
Behavioral Impact in Facility	
Location	226
Free Trade and Location	
Alternatives	228
Summary	231
<b>Supplement to Chapter 6</b>	240
Linear Programming: The	
Transportation Method	240

<b>CHAPTER SEVEN</b>	<b>Layout Planning</b>	<b>251</b>
	Layout Concepts	252
	Developing the Process Layout:	
	Models and Behavior	256
	First Chicago, Quaker Oats, and	
	Xerox Use Computers for Office	
	Layout	262
	Developing the Product Layout:	
	Assembly Line Models and	
	Behavior	264
	North American Companies Balance	
	the Line in a Variety of Ways	268
	Manufacturing Cellular Layouts	273
	Cellular Layouts Achieve Improved	
	Performance	274
	Summary	277

**PART THREE**

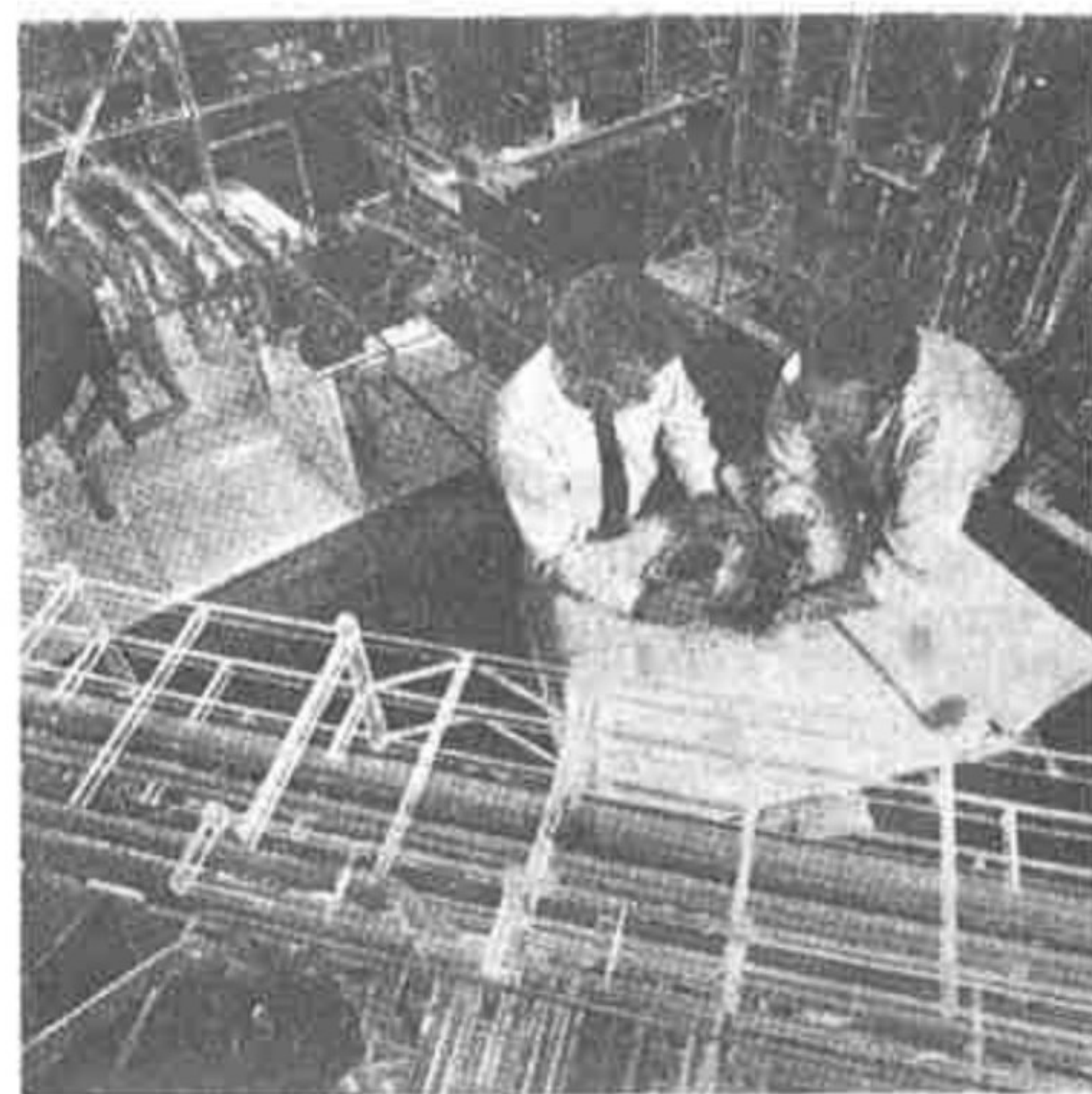
**Organizing the Conversion System 289**

<b>CHAPTER EIGHT</b>	<b>Job Design, Production and</b>	
	<b>Operations Standards, and</b>	
	<b>Work Measurement</b>	<b>290</b>
	Job Design	292
	Effective Job Design: Combining	
	Engineering and Behavioral	
	Approaches	302
	Production and Operations	
	Standards	303
	Work Measurement	307
	Work Measurement Works	310
	Computerized Offices Are Changing	
	the Nature of Work Measurement	
	Techniques	318
	Compensation	320
	Summary	321





**Project Management** 332  
 Planning 333  
 Scheduling Models 334  
 and Aircraft Manufacturer  
 PERT Useful 338  
 A PERT Personal  
 Computer Package 346  
 Managing the Project 352  
 Summary 358



F O U R

**Scheduling Production and Service Systems** 371

**Scheduling Systems and Aggregate Planning for Production and Services** 372  
 Capacity Planning and Scheduling 373  
 Scheduling for Small Airlines Has  
 S and DOWNS 376  
 Aggregate Planning Process 378  
 Scheduling for Developing Aggregate  
 Scheduling and Rough-Cut  
 Capacity Planning 389  
 Aggregate Planning for Service  
 Organizations 391  
 Integrating Aggregate Plans and  
 Schedules 398  
 Technology Affords Better  
 Scheduling for Deliveries 400  
 Summary 402

**CHAPTER ELEVEN Operations Scheduling** 409  
 Intermittent Systems 410  
 Intermittent Scheduling Concepts  
 and Processes 411  
 Scheduling Employees at Marriott is  
 Serious Business 412  
 Loading 416  
 Priority Sequencing 421  
 Detailed Scheduling 429  
 Finite Loading 430  
 Expediting 433  
 Input-Output (Short-Term  
 Capacity) Control 433  
 Optimized Production Technology  
 (OPT) 433  
 U.S. Army Uses Big Guns to Plan  
 and Schedule 434  
 Behavioral Elements in Intermittent  
 Systems 436  
 Summary 438

P A R T F I V E

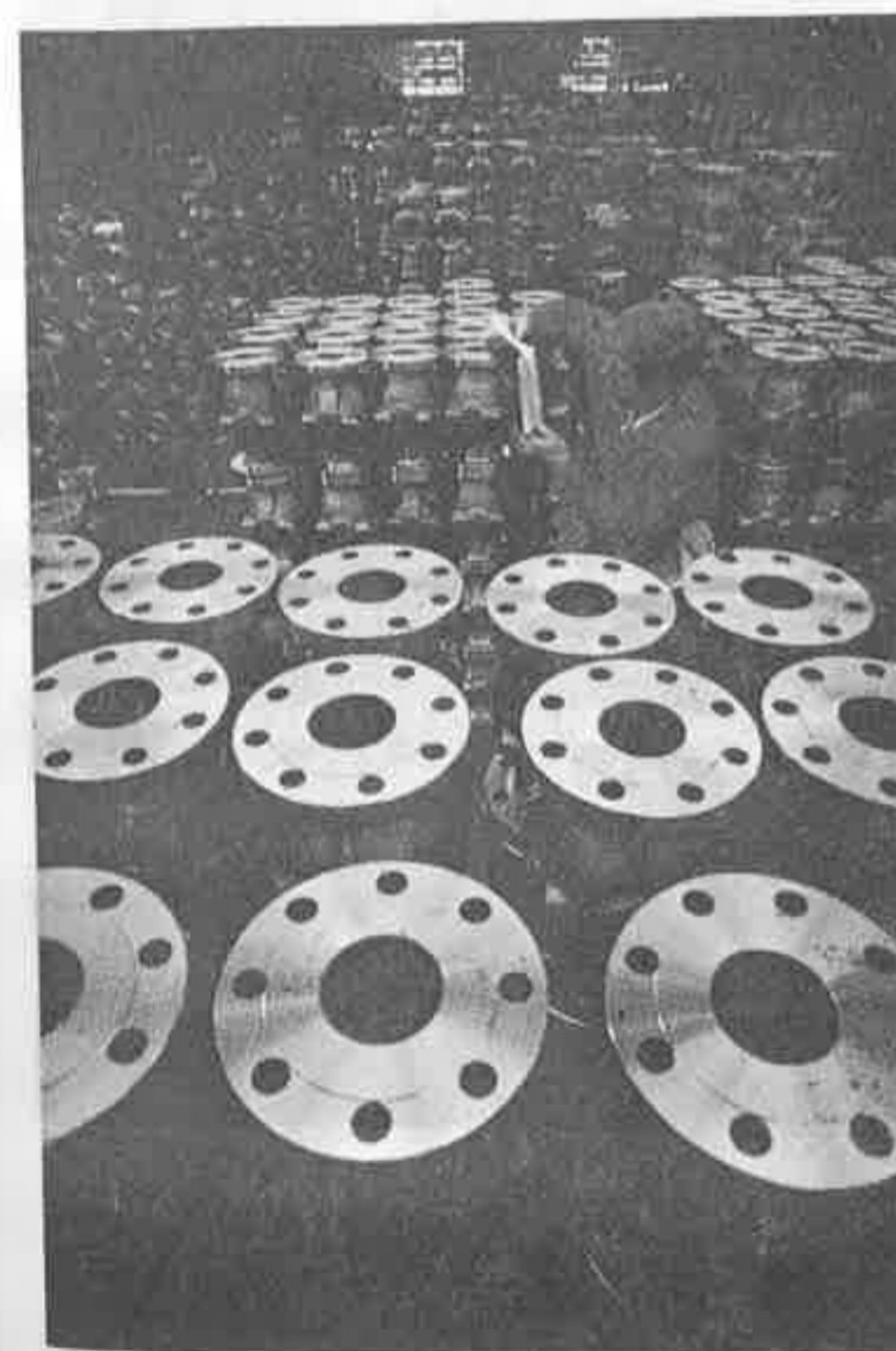
**Controlling The Conversion System** 449

**CHAPTER TWELVE Inventory Control Fundamentals** 450  
 Demand and Control System  
 Characteristics 452  
 Inventory Concepts 452  
 Inventory Costs 461  
 Inventory Modeling 464  
 Inventory Modeling Saves Utility  
 Industry Millions 465  
 Deterministic Inventory Models 468  
 Summary 477  
**Supplement to Chapter 12** 483  
 Optimization and Inventory Control 483

**CHAPTER THIRTEEN Inventory Control Applications** 486  
 Deterministic Inventory Models 487  
 Stochastic Inventory Models 490  
 Spare Parts Inventory Important to  
 After-Sales Service Strategies 494



Inventory Control in Application 501  
 Manufacturers Realize Quick  
 Payback for Bar-Code Technology 506  
 Behavioral Pitfalls in Inventory  
 Control 508  
 Summary 509



**CHAPTER FOURTEEN Material Requirements Planning** 521  
 Planning for Materials Needs 522  
 Applying MRP as a Scheduling and  
 Ordering System 523  
 Detailed Capacity Planning 537  
 MRP Provides the Right Formula  
 for Dow Chemical 538  
 Limitations and Advantages of MRP 540  
 Manufacturing Resource Planning  
 (MRPII) 542  
 Purchasing 545  
 Parke-Davis is Looking Out for Your  
 Health by Using MRP 546  
 Summary 548



S I X

Managing For World Class Competition 561

Japanese Contributions to World Class Manufacturing 562  
 Management Overview 563  
 Time Manufacturing 567  
 Global Power Is Growing 572  
 Conquest of Japanese Manufacturing in the United States 583  
 American Firms Successfully Adopt Japanese Manufacturing Techniques 584  
 Summary 587



Managing for Quality 594  
 Social Responsibility in Managing for Quality 595  
 Quality 596  
 Managing for Quality Products and Services 598  
 Continuous Improvement, Total Quality Management, and Control 603

Does Quality Cost or Pay? 604  
 American Company Awarded Deming Prize for First Time 610  
 Management-Initiated Approaches and Actions to Improve Quality Behavior and Quality 613  
 Summary 622

CHAPTER SEVENTEEN Quality Analysis and Control 628  
 Process Variation 629  
 Statistical Process Control 634  
 Statistical Quality Control Can Be Good for Your Health 646  
 Inspection 649  
 Acceptance Sampling 651  
 Quality Control at Tandy Means Reliability for Customers 656  
 Summary 659



P A R T S E V E N

Dynamics of Operations Management 671

CHAPTER EIGHTEEN The Conversion Process in Change 672  
 Dynamics of Production and Operations Management 673  
 Mercedes Changes Onto the Fast Track for Luxury-Car Supremacy 676  
 System Dynamics 688  
 Overview of Production and Operations Management 689  
 Levi Is Changing More Than Its Jeans 692  
 Summary 694  
 Appendix 698  
 Glossary 702  
 Name Index 715  
 Subject Index 719

PREFACE





# N A M E I N D E X

## A

Aegglen, J. C., 564, 593  
 Abernathy, H., 507  
 Abernathy, W. J., 152  
 Ackerson, G. G., 372-373  
 Adam, E. E., Jr., 41, 64, 84, 103, 117,  
 275, 294-295, 321, 598, 608,  
 619, 627, 680-682, 697  
 Aggarwal, S., 583  
 Aldag, R. J., 301, 331  
 Alton, B., 141  
 Aly, A. A., 222, 239  
 Anderson, D. R., 210, 250  
 Anderson, J. C., 541-542  
 Andrew, C. G., 30  
 Andrisani, P.J., 99  
 Ansari, A., 583, 586, 593  
 Armisted, C., 495  
 Armour, G. C., 260, 287  
 Askari, E., 139, 140  
 Assad, A. A., 164, 347  
 Athos, A. G., 565, 593  
 Aubrey, C. A., II, 621, 670  
 Auguston, K. A., 269  
 Auray, R. R., 87  
 Averill, B., 176

## B

Bac, Z., 356  
 Ball, M. O., 164  
 Bardi, E. J., 221, 239  
 Barker, E. M., 598, 627  
 Barnes, F. C., 331  
 Barnes, R. M., 331  
 Baron, R., 176  
 Barrett, R. B., 87  
 Barrier, M., 217  
 Barron, M., 87  
 Barun, R., 677  
 Basu, S., 89

Beak, L., 311  
 Benne, K. D., 681  
 Bennis, W. G., 681  
 Berry, W. L., 391, 408, 447, 534,  
 536-537, 559, 685  
 Bierman, H., Jr., 210, 250  
 Biggs, J. R., 84, 116, 536  
 Blackburn, J.D., 621  
 Blair, J. D., 621  
 Blanchard, B. S., 126, 152  
 Bodin, L. D., 164  
 Bonini, C. P., 210, 250  
 Bowman, E. H., 395  
 Box, G. E. P., 117  
 Bradford, J., 287  
 Breen, M., 275, 287  
 Bremner, B., 275  
 Brief, A. P., 301, 331  
 Britney, R. R., 50  
 Brown, R. G., 78, 117, 519  
 Bu-Bushait, K. A., 356  
 Buchan, J., 496, 519  
 Buffa, E. S., 191, 239, 257, 260, 287,  
 408, 426, 482, 519  
 Burch, C. G., 23  
 Burnstein, M. C., 30, 45, 64

## C

Campion, W. M., 84, 116  
 Candler, J., 401  
 Capoor, R., 622  
 Chaney, F. B., 622  
 Chang, Y., 201, 210, 612  
 Chao, H., 467  
 Chapel, S. W., 467  
 Chase, R. B., 143  
 Chen, F., 275  
 Chin, R., 681  
 Chopra, V., 543  
 Clark, C. E., 467  
 Clark, G., 495

Cleland, D. I., 369  
 Cohen, M., 495  
 Cohen, S. S., 593  
 Cole, J. J., 239  
 Cole, R. E., 64, 566  
 Collins, R. W., 30, 64  
 Comstock, V. C., 621  
 Conway, R. W., 426, 447  
 Corey, K. E., 681  
 Cowan, T. E., 260, 287  
 Coyle, J. J., 221  
 Cozens, A. C., 317  
 Crawford, J. C., 146  
 Crosby, P. B., 616, 627-628

## D

Davis, A. B., 99  
 Davis, E. W., 369  
 Davis, L., 507  
 Davis, V., 261, 287  
 Dean, B. V., 58  
 DeForest, M. E., 61  
 deKluyver, C. A., 119, 152  
 Delbecq, A. L., 117  
 Demeyer, A., 54-57, 64  
 Deming, W. E., 601, 615, 627-628,  
 670  
 Demko, D. C., 311  
 Demos, M. P., 647  
 Demos, N. P., 647  
 Denton, K., 657  
 DeYoung, G., 605  
 DiGiacomo, R. L., 316  
 Dodge, H. F., 658, 670  
 Doell, D. W., 294  
 Dowling, W. F., 300  
 Duin, G. E., 693  
 Duncan, A. J., 670  
 Dunford, F., 87  
 Dunham, R. B., 301



## H

- 7, 321, 399, 426,  
80-681, 697  
1, 670  
593  
45, 64  
45, 64, 621-622  
64  
3  
3, 697  
7  
20  
20  
0, 645, 670,  
21, 619,  
27  
27, 152
- Hadley, G., 48, 519  
Hakala, N. V., 121, 152  
Hall, R. W., 568-570, 573, 582, 593,  
616-617  
Hanke, J., 87, 117  
Hansen, A. D., 567  
Hansen, B. L., 648  
Harris, F. W., 468, 482  
Hart, M., 146  
Hausman, W. H., 210, 250  
Hawkins, C., 377  
Hayes, R. H., 120, 130-132, 134, 152  
Hazen, E., 339  
Heck, M., 347  
Heiko, L., 593  
Helper, S., 61  
Hellriegel, D., 697  
Heppenheimer, T. A., 401  
Hershauer, J. C., 317, 426, 447, 602,  
608, 627  
Hetzner, W. A., 152  
Hicks, P. E., 260, 287  
Higgins, J. C., 356  
Hill, T., 43, 64, 130, 132, 152  
Hinrichs, J. R., 622, 627  
Hirsch, J. L., 140  
Hoel, P. G., 698  
Hogarth, R. M., 105, 117  
Hogg, C., 677  
Holder, B., 507  
Holmgren, K. M., 269  
Holt, C. C., 397, 408  
Holzinger, A. G., 229  
Hopkins, L. D., 261, 287  
Hostage, G. M., 622, 670  
Hsiang, T., 576, 593  
Hyer, N. L., 140, 152, 287
- I  
Ireson, W. G., 152, 699-700  
Ishikawa, K., 627
- J  
Jacobs, F. R., 261, 287, 434, 447  
Jacobs, R., 275, 287  
Jelinck, M., 191  
Jenkins, C. M., 117, 139  
Johnson, G. A., 30, 619  
Johnson, R., 122, 222, 260, 287  
Johnston, D. A., 50  
Juran, J. M., 601, 606, 615, 627-628,  
670

## K

- Kanin-Lovers, J., 15  
Kapoor, V., 269  
Keys, J. B., 226, 565  
Khumawala, B. M., 398, 408  
Kim, J. S., 56  
King, B. E., 593  
Kitska, T. J., 87  
Kivenko, K., 675, 697  
Klein, K. J., 152  
Kleindorfer, P., 495  
Kocaoglu, D. F., 369  
Koenigsberg, E., 496, 519  
Krajewski, L. J., 389, 408, 593  
Kreitner, R., 619  
Kudar, R. P., 50  
Kuntz, M., 139  
Kwak, N. K., 164
- L  
Labovitz, G. H., 612  
Laemle, R. C., 138  
Laffel, G., 647  
Lahr, T. N., 43, 45  
Lasdon, L. S., 58  
Lawrence, M. J., 103, 117  
Leavenworth, R. S., 152, 640, 645,  
670, 699-700  
Leavitt, M. B., 164  
Lee, H., 495  
Lee, J., 357  
Lee, S., 356  
Lee, S. M., 583, 586, 593  
Lee, T. S., 84, 117  
Lee, W. B., 398, 408  
Leech, D. J., 127  
Leck, J. W., 616  
Legentil, J. M., 50  
LeGrande, E., 426  
Leong, G. K., 45  
Levy, F. K., 369  
Liao, W. M., 152, 157  
Litwhiler, D. W., Jr., 222, 239  
Long, R. J., 15  
Love, R. F., 224, 239  
Lubben, R. T., 593  
Lyons, D., 167

## M

- Mabert, V. A., 22, 30, 87  
McKennon, K. R., 539  
McLeavy, D. W., 191, 287, 391,  
408, 447, 535, 541, 559  
McMillan, L., 263  
McMinn, J., 563

- Makridakis, S., 103, 105, 117  
Mallentacchi, M., 15  
Malon, R. E., 450  
Mandell, B., 15  
Manoogian, J. A., 595, 617  
Maremont, M., 413  
Markowitz, A., 217  
Marriott, Jr., B., 412  
Marriott, Sr., B., 412  
Martin, J., 53  
Maruyama, M., 125  
Maxwell, W. L., 447  
Meal, H. C., 373, 408  
Meatyard, S., 507  
Meredith, J. R., 498, 520  
Merwin, J., 547  
Middleton, J., 127  
Miller, D. W., 482, 520  
Miller, E. P., 294  
Miller, J. G., 54-57, 64, 408, 519,  
559  
Miller, L. W., 447  
Miller, R. G., 482  
Miller, T. R., 226, 565  
Mills, J., 369  
Mintzberg, H., 40  
Mirowski, P., 61  
Moder, J. J., 369  
Modigliani, F., 397, 408  
Moore, S. C., 294  
Morita, A., 566-567  
Morris, P. A., 467  
Muller, E. J., 693  
Munchus, G., III, 621, 627  
Murdick, R. G., 87  
Murrin, T. J., 49  
Muth, J. F., 117, 397, 408

## N

- Nakane, J., 54-57, 64, 570  
Napier, H. A., 536  
Narasimhan, S. L., 191, 287, 391,  
408, 447, 535, 541, 559  
Neff, R., 693  
Negri, R. M., 76  
Newell, W. T., 122, 222  
Nichols, D., 15  
Noori, H., 593

## O

- O'Brien, R. F., 162-163  
O'Hare, J., 339  
Okogbaa, O. G., 319  
Olson, R. P., 520  
O'Reilly, B., 145  
Orlicky, J. A., 525, 559  
Ouchi, W. C., 565, 593

## P

- Pande, G. N., 127  
Pascale, R. T., 565, 593  
Pasumarti, V. K., 495  
Patterson, J. H., 632, 670  
Payne, S., 377  
Peters, T. J., 596  
Peterson, L. D., 559  
Peterson, R. T., 80  
Pfaffenberger, R. C., 632, 670  
Phillips, C. R., 369  
Pierce, J. L., 301  
Pipal, C. W., 291  
Pipp, F. J., 618  
Plalts, K. W., 45  
Plossl, G. W., 525  
Prete, D. D., 229

## Q

- Quelch, J. A., 602, 627

## R

- Raedels, A. R., 139  
Ragsdell, K. M., 127  
Ramsing, K. D., 621  
Rawlinson, H., 693  
Reid, R. A., 87  
Reinhold, V. N., 622  
Rice, R. S., 317, 320, 331  
Rider, K. L., 220  
Rising, E. J., 176  
Ritzman, L. P., 261, 287, 389, 408,  
593  
Robbins, S. P., 227  
Rochelle, C., 87  
Rogers, J. D., 221  
Romig, H. G., 658, 670  
Rosander, A. C., 627  
Ruch, W. A., 53, 317, 536, 559, 602,  
608, 619, 627  
Russell, T. D., 103  
Ruwe, D. M., 2  
Ryan, A. J., 612  
Ryser, J., 693

## S

- Sakamoto, S., 317, 331  
Samuels, J. M., 457  
Sandling, M. J., 467  
Saniga, E. M., 606, 651, 670  
Sarin, R. K., 89  
Sasser, W. E., 520  
Savdam, C., 164

- Schilling, D. A., 181, 191  
Schmenner, R. W., 30, 43, 64, 118,  
152, 191, 214, 239, 685, 697  
Schonberger, R. J., 64, 569-570,  
584-585, 593, 617  
Schroeder, M., 377  
Schroeder, R. G., 43, 45, 89, 191,  
541-542  
Schuler, R., 261, 287  
Scott, W. E., Jr., 619, 682, 697  
Scriabin, M., 261  
Shao, M., 693  
Shaw, J. C., 622  
Shein, J. B., 619  
Shell, R. L., 319  
Shewhart, W. A., 634  
Shinnick, M. D., 311  
Shirland, L. E., 606, 651, 670  
Shostack, G. L., 152  
Shtub, A., 348  
Simon, H. A., 397, 408  
Skinner, W., 30, 40, 45, 64, 191, 227,  
239, 273  
Slautterback, W. H., 136  
Slocum, J. W., Jr., 697  
Slusher, E. A., 127  
Smith, L. A., 369  
Smith, L. M., 347  
Smyth, D. J., 457  
Snyder, D. L., 45  
Solaz, D., 263  
Sondern, A., 521-522  
Spain, T., 319  
Sprague, D. A., 619  
Sprague, L. G., 559  
Stafeil, W. W., 410  
Stalk, G., 564, 593  
Starr, M. K., 482, 520  
Stee, S., 507  
Steers, R. M., 227  
Stefanovic, A. M., 311  
Steinberg, E., 536  
Steinberg, T., 216  
Stevenson, W. J., 520  
Stimson, R. A., 672-673  
Stobaugh, R., 152  
Stratton, B., 605  
Student, K. R., 697  
Sullivan, R. S., 30, 697  
Suzaki, K., 593  
Swamidass, P. M., 45, 64, 135, 219,  
239, 593  
Swartz, G. E., 621  
Sweeney, D. J., 210, 250  
Syrett M., 677  
Szilagyi, A. S., Jr., 300-301, 331

## T

- Taguchi, G., 575-576  
Takeuchi, H., 602, 627



## W

Wagner, H. M., 536, 559  
 Wall, J. A., 25  
 Wallace, M. J., Jr., 300, 331  
 Walsh, J., 50  
 Ward, P. T., 45  
 Wash, E. A., 347  
 Waterman, R. H., 596  
 Watts, K. M., 356  
 Wayne, S. J., 622, 627  
 Weeks, J. K., 447  
 Weist, J. D., 369  
 Wemmerlov, U., 287  
 Werther, W. B., Jr., 53, 136  
 Wheelwright, S. C., 117, 120,  
 130-132, 134, 152  
 White, E. M., 541  
 White, J. A., 287  
 Whitin, T. M., 482, 519, 536, 559  
 Whybark, D. C., 30, 64, 391, 408,  
 447, 534, 537, 559, 685  
 Wilkerson, K. L., 211  
 Williams, J. G., 559  
 Williams, T. A., 210, 250

Williamson, M., 347  
 Willoughby, W. W., 251  
 Wilson, M., 275, 287  
 Winkler, R. L., 103  
 Wolfs, D. O., 486  
 Wood, L., 347  
 Wright, O. W., 525  
 Wyckoff, D. D., 520

## Y

Yelle, L. E., 153  
 Yerex, L., 224, 239

## Z

Zinn, B., 619  
 Zoiner, J., 378  
 Zysman, J., 593

## S U B J E C T I N D E X

## A

Abbott Laboratories, 99, 138  
 ABC inventory classification, 502-503  
 Absenteeism, 227, 230, 675  
 Acceptable quality level, 652  
 Acceptance number (c), 652-653  
 Acceptance of authority, 226  
 Acceptance sampling, 651  
 Accounting life, 66  
 Activity(ies)  
   in operations management, 689  
   in PERT, 337, 340-341  
 Activity charts, 292-293  
 Adaptive exponential smoothing, (*see*  
   Forecasting techniques)  
 Advance design, 123, 126  
 Advance product planning, 123, 126  
 Advanced Manufacturing Systems'  
   World Class Manufacturing  
   Award, 434  
 Africa and Near East, 55  
 After-sales service strategies, 494-495  
 Aggregate capacity planning, 374, 388,  
 415, 523, 686  
 Aggregate demand, 375  
 Aggregate output planning, 374, 415,  
 523  
 Aggregate planning, 378  
   basic concepts, 378  
   behavioral factors, 399  
   complexity, 399  
   costs, 395  
   decision variables, 395  
   demand, 395  
   disaggregation, 389  
   dynamic nature, 399  
   forecasts for, 379  
   goals, 379  
   graphical method, 383  
   heuristic approach, 397  
   implementation, 398  
   interrelationships, 379  
   measure of output, 378  
   models, 171, 395, 398

Aggregate planning (continued)  
   planning horizon, 384, 388, 395  
   production smoothing, 388  
   rolling through time, 399  
   search procedures, 397  
   selecting a technique, 397  
   for service organization, 391  
   strategies for, 381, 383  
   time horizons, 399  
   tradeoffs in, 383  
   work force size and utilization, 383  
 Aggregation concept, 378-379  
 Airbus, 79  
 Algorithm, 198, 242, 416  
 Alpha error, 639  
 American Association of Collegiate  
   Schools of Business, 87  
 American Institute of Medical Law,  
 646  
 American Production and Inventory  
   Control Society (APICS), 541,  
 559  
 American Productivity and Quality  
   Center (APQC), 50, 316  
 American Society for Quality Control  
   (ASQC), 619  
 Analysis, 171, 204  
 Analysis for quality improvement,  
   assurance, and control, 603,  
 606-610  
 Andon, 574  
 Applied research, 121, 151  
 Appraisal costs, 603  
 Arc, 336  
 Arizona State University, 317  
 Arkansas Freightways, Inc., 39  
 Artificial variables, 205  
 Assembly diagram, 530  
 Assembly-line balancing, 270  
   capacity, 266  
   North American Companies,  
   268-269  
   sequence of tasks, 267  
 Assembly-line behavior, 264-273  
 Assembly-line layout (*see also* Layouts)  
   graphic and tabular, 264

Assembly-line models, 264-273  
 Assembly-line technology, 151  
 Assembly-type system, 40  
 Assignment algorithm, 416, 418  
 AT&T, 145  
 Atlantic Southeast Airlines (ASA),  
 376-377  
 Attribute characteristic, 634  
 Attributes measurement, 634  
 Automation, 51, 146  
 Auyoma Gakvin University, 25  
 Average flow time, 423  
 Average fraction defective (p), 643  
 Average job lateness, 423  
 Average range ( $\bar{R}$ ), 641  
 Average worker, 307

## B

Backlog, 393-394  
 Backorders, 383  
 Barcoding, 505-507  
 Basic research, 121  
 Batch, 131  
 Batch technology, 151  
 Baumritter Corporation, 686  
 Behavior, 16  
   in aggregate planning, 399  
   aggregate planning implementation,  
   399  
   employee, 674  
   and quality, 618-622  
   resistant, 684  
 Behavioral aspects of product layout,  
 273  
 Behavioral change, 675, 680  
 Behavioral management, 13  
 Behavioral modification in quality  
   control, 619-620  
 Behavioral pitfalls in inventory control,  
 508  
 Behavioral school of management, 11,  
 13



Capacity planning (continued)  
 environment, 163  
 modeling, 164, 171-181  
 need for, 163  
 rough-cut, 375, 391  
 Capital intensive, 146  
 Cardex file system, 505  
 Careers in production/operations  
 management, 22, 26  
 Carnival Cruise Lines, 167  
 Cash flow, 66  
 patterns, 66  
 planning, 157  
 Caterpillar, Inc., 274-275, 495, 602  
 Cause and effect (fishbone) diagram,  
 575  
 Cells, 141  
 Cellular layouts, 273-277  
 in manufacturing, 273-275  
 Census of Manufacturers, 218  
 Central Limit Theorem, 635  
 Certainty, 32-33  
 Chance event, 177-179  
 Change:  
 assessing overall effects of, 688  
 behavioral targets for, 679, 681  
 desired results of, 674  
 environmental sources of, 675  
 external indicators of need for,  
 675  
 facilitators of, 685  
 internal indicators of need for,  
 673-674  
 learners of, 685  
 managing, 684  
 overcoming resistance to, 684  
 process in production/operations,  
 674, 679  
 processes, rational/technical, 679  
 reasons of resistance to, 683  
 recognition of need for, 673-674  
 resistance to, 683  
 role of top management, 685  
 targets for, 674, 676  
 technology, 678  
 thaw-move-refreeze model, 680  
 training for, 683  
 Change agent, 685  
 Chase plan, 386-387  
 Chronic condition, 633 (*see also*  
 Process, chronic condition)  
 Chronic problems, 606  
 Chrysler Corporation, 61, 562, 583  
 City of Columbia, Missouri, 450-451  
 Clark Distribution Services Company,  
 311  
 Classical management, 11-12  
 Classical optimization, 483  
 Combination layouts, 255-256  
 Commercial use, 122  
 Community attitudes, 218  
 Community response to location, 226  
 Company goals, 379

Company-wide quality control,  
 599-600  
 elements of, 599-600  
 Compensation, 320-321  
 Competitive benchmarking, 618  
 Competitive challenge in operations,  
 54-58  
 Compound interest factors, 66-68,  
 699-700  
 Compound rules, 426  
 Computer:  
 employee performance monitoring  
 by, 318-319  
 models, 260-261, 266  
 search methods, 397-398  
 Computer aided design (CAD), 136,  
 151, 260, 263  
 functions, 137  
 Computer aided manufacturing  
 (CAM), 138, 151  
 Computer-integrated manufacturing  
 (CIM), 136, 151  
 Computer simulation (*see* Simulation)  
 Conformance, 600  
 Consolidated Freightways, Inc.,  
 162-163  
 Consumer behavior, 228  
 Consumer considerations, 228  
 Consumers Power of Jackson,  
 Michigan, 466  
 Consumer's risk, 639, 652-653  
 Continuous flow technology, 132, 151  
 Continuous operations and layout  
 planning, 252  
 Continuous system, 40  
 Control:  
 of inventory systems  
 process, 433  
 shop floor, 375-377  
 Control charts, 634, 645  
 for attributes, 643-646  
 construction, 640  
 developing, 636  
 evidence for investigation, 648  
 interpretation, 642  
 for range, 642  
 software, 648  
 updating, 637  
 for variables, 634, 641  
 Control limits, 634  
 lower, 634  
 upper, 634  
 Controlling, 12, 16 (*see also* Control)  
 the work center's performance, 433  
 Control system:  
 elements, 452-453  
 push versus pull, 576-578  
 Conversion process, 4  
 in change, 671-672  
 Conversion technology, 677  
 Copeland Corporation, 2, 269  
 Cost of quality, 603, 607  
 Cost strategy, 19

Costs:  
 activity direct, 346  
 actual, 65  
 of work completed (ACWC), 354  
 in aggregate output planning,  
 384-388  
 appraisal, 603  
 budgeted, 354  
 of work completed (BCWC), 354  
 of work scheduled (BCWS), 354  
 current, actual, 65  
 direct labor, 674  
 discontinuous, 213-214  
 employee training, 382  
 of expansion, 170  
 expected, in decision tree analysis,  
 180-181  
 external failure, 603  
 in facility location planning,  
 212-215  
 in financial and economic analyses,  
 65  
 fixed, 214  
 hiring and layoff, 382-383  
 indirect labor, 674  
 indirect project, 347  
 internal failure, 603  
 inventory, 461-464, 536-537 (*see*  
*also* Inventory costs)  
 labor, 382-383, 674  
 material handling, 456  
 opportunity, 65  
 order, 536-537  
 in PERT analysis, 346-347  
 prevention, 603  
 setup, 421, 426  
 stockout, 462, 497  
 sunk, 65  
 of supply, in purchasing, 548  
 tradeoffs involving:  
 in aggregate planning, 383  
 in forecasting, 85  
 in inventory control, 463-464  
 in operations subsystem, 20-21  
 in PERT, 346-347  
 in quality control, 618-619  
 transportation, 222-226, 240-250  
 variable, 214  
 CPC International, 98  
 CRAFT layout model, 260  
 Criterion for measuring, 175  
 Critical fractile, 498-499  
 Critical path method (CPM) (*see*  
 PERT)  
 Crosby's concept of free quality, 616  
 Cultural differences in location, 226  
 Customer(s):  
 behavior of and process layout, 264  
 contact with, 143, 146  
 needs, 569  
 perceptions, 601  
 service, 522, 674  
 supplier cooperation, 675

Custom-shop services, technology, 151  
 Cycle counting, 534  
 Cycle time, 267  
 D  
 Decision making, 11, 13  
 centralized vs. decentralized, 437  
 Decision problems, scientific approach,  
 679  
 Decision tree, 177  
 Decision tree analysis, 172, 177-181  
 Decision variables, 175, 192  
 Decoupling, 456  
 Decoupling operations, 502  
 Degeneracy, 246, 250  
 Delivery performance, 522  
 Delta Airlines, 377  
 Demand:  
 characteristics, 81-82  
 dependency, 522  
 dependent versus independent, 82,  
 522  
 during lead time, 492-493  
 forecasting, 79-80, 85  
 noise, 81  
 variable, 490-491, 493, 496-498  
 Demand and control system  
 characteristics, 452  
 Demand pattern, 81  
 dynamic (unstable), 82  
 stationary (stable), 82  
 Demand stability, 81-82  
 Deming Award, 575  
 Deming prize for quality, 609-612  
 Deming's Fourteen Points, 571  
 Deming's statistical thinking, 615  
 Department location (*see* Layouts)  
 Department of Commerce, 218  
 Departments, 291  
 Dependability, 19  
 Dependent demand, 82  
 Depreciation, 65  
 Derivative, 483  
 Design:  
 for function, 126  
 for maintainability, 126  
 objectives, 126  
 for producibility, 126  
 for quality, 597  
 for reliability, 126  
 for safety, 126  
 Design concept, 126  
 Design of product and process, 118  
 Design of services, 141  
 Design processes, 127  
 Design productivity, 137  
 Design specifications of product, 596  
 Detailed analysis, 218  
 Detailed Capacity Planning (DCP),  
 374-375, 415-523

Detailed engineering design, 123, 126  
 Detailed scheduling, 374-375, 412,  
 414-415, 429, 523  
 Deterministic Inventory Models,  
 487-490  
 Development, 121-122, 151  
 Diamond-Star Motors, 209  
 Diet Center, 145  
 Direct time study, 309  
 Disaggregation, 375, 389  
 Discontinuous revenues and costs, 213  
 Distribution method of linear  
 programming (*see*  
 Transportation method of linear  
 programming)  
 Distribution Requirements Planning  
 (DRP), 539  
 Donaldson Company, Inc., 77  
 Double exponential smoothing, 100  
 (*see also* Forecasting techniques)  
 Dow Chemical, 538  
 Dynamic Inventory Levels, 501

E  
 Earliest-due-date rule (EDD), 422  
 Economic analysis, 122  
 Economic life, 66  
 Effectiveness, 19, 42  
 Effects of  $n$  and  $c$ , 654  
 Efficiency, 12, 41-42, 524  
 Electric Power Research Institute, 465  
 Employee behavior/performance:  
 computerized monitoring of,  
 318-319  
 conventional vs. incentive pay  
 systems and, 320-321  
 feedback on, 508-509  
 as indicator of need for change, 674  
 learning process and, 682  
 motivation and, 437, 619  
 peer group influences on, 684  
 process layout and, 261  
 product layout and, 271  
 strategies for changing, 681  
 as target for change, 681  
 Employee participation, 15  
 in change process, 684  
 concerns with job security and, 684  
 in decision making, 437-438  
 in Japan, 566-567  
 in job redesign, 301-302  
 in quality improvement, 613, 618  
 Employees:  
 absenteeism of, 227, 271, 674-675  
 compensation of, 320-321  
 cultural differences in, and location  
 planning, 226-227  
 group affiliations of, 141, 357, 437  
 individual differences among, and  
 job redesign, 301-302



- (continued)  
 scheduling of, 412-413  
 66-567  
 for, 271, 299, 437  
 for, 271, 298,  
 271, 297-299  
 of, 227, 271,  
 during slack periods,  
 a, 684  
 behavior, 679  
 , 614-615, 619  
 , 271, 674, 684  
 437, 610  
 of, in aggregate  
 32-383  
 ment of, 296-297  
 , 169  
 ty, 379  
 e at Cambridge, 45  
 9  
 tem, 227  
 cells, 243  
 ction, 177  
 f stockouts, 497  
 cost, 497  
 , 179  
 5, 414-415, 433,  
 ing, 93-97, 100  
 s, 603  
 2  
 Capacity)  
 layouts)  
 ing (see Layout  
 Location of  
 ning, 212, 218  
 tion)  
 239  
 quality, 601  
 Federal Highway Administration, 401  
 Feedback, 6, 508  
 Financial and economic analysis in  
 operations, 65-72  
 First Chicago Corporation, 262-263  
 First-come-first-served rule (FCFS),  
 421  
 First Express, 409-410  
 First order exponential smoothing,  
 93-95 (see also Forecasting  
 techniques)  
 First Tennessee Bank, N.A., 409  
 Fishbone diagram, 575  
 Fixed costs, 214  
 Fixed-position layout, 254-255  
 Flexibility, 19, 42, 143, 581  
 with automation, 582  
 Flexible manufacturing systems  
 (FMS), 133-134, 151, 581  
 characteristics of, 135  
 goal, 135  
 Florida Department of Insurance, 647  
 Florida Power and Light, 610-612  
 Flow process charts, 293  
 Flowtime, 422  
 Foolproofing, 571  
 Ford Motor Company, 61, 311,  
 594-595, 601, 617  
 Forecast, 78, 524  
 Forecast error, 83-85  
 bias, 83-84  
 mean absolute deviation, 83  
 Forecasting, 76-117  
 for aggregate planning, 391  
 behavioral dimensions, 103-105  
 cost vs. accuracy, 103  
 defined, 78-79  
 how the computer assists, 86-87  
 incorporating trend and seasonal  
 components, 97  
 and operations subsystems, 79-80  
 selecting parameters and computing  
 models, 97, 102-103  
 Forecasting approaches, 85  
 causal forecasting models, 85  
 demand-based models, 85  
 intuitive forecasts, 85  
 statistical forecasting models, 85  
 Forecasting in operations, 77-85  
 Forecasting, planning, and behavior,  
 105  
 Forecasting techniques:  
 intuitive, 85, 104-105  
 qualitative:  
 delphi technique, 89  
 nominal group technique, 90  
 quantitative models, 90-102  
 adoptive exponential smoothing,  
 97  
 double exponential smoothing,  
 100  
 exponential smoothing, 93-97,  
 100

- Forecasting techniques: (continued)  
 first-order smoothing, 93-95  
 linear regression, 100-102  
 simple average, 90-91  
 simple moving average, 91-92  
 weighted moving average, 92-93  
 summary, 88  
 Fraction defective chart, 643, 645  
 Functions, 291

## G

- Gang process chart, 295  
 Gantt charts, 334-336  
 symbols, 334  
 Gantt load chart, 416  
 Gantt scheduling chart, 429  
 General Electric Company, 61, 118,  
 123, 125, 140, 338-339, 583,  
 585, 601  
 General Foods, 61, 300  
 General Motors Corporation, 140,  
 164, 251, 401, 582-583  
 Gillette Company, 229  
 Gitlow and Gitlow, 615, 627  
 Global manufacturing competitiveness,  
 22, 691  
 Global operations, 22  
 Globalization, 22 (see also  
 International)  
 Globe Metallurgical, Inc., 605  
 Gradual replacement model, 473  
 Graphical method:  
 in aggregate planning, 383  
 in linear programming, 193-198  
 Grievances, 227, 230  
 Gross requirements, 526  
 Group:  
 affiliations, 437  
 characteristics, 437  
 cohesiveness, 437  
 norms, 437  
 relationships, 437  
 Group technology, 140, 151, 273  
 Grumman Electronic Systems Division,  
 99  
 GTE Telecom, 338-339

## H

- Hallmark Cards, Inc., 521, 600  
 Harris Corporation, 139  
 Harvard Business School, 45  
 Heuristic(s):  
 for aggregate planning, 397  
 for assigning tasks, 270  
 computer-based, 270  
 defined, 266  
 for product layout, 266, 270-271

- Hewlett Packard, 583-584  
 Hiring people, 169  
 Histogram, 609, 631-632  
 capability histograms, 632  
 Homogeneous resources, 250  
 Honda of America, 562  
 Human learning, 679  
 Human relations, 11, 13

## I

- IBM, 121, 140-141, 519  
 manufacturing accounting and  
 production control system,  
 IBM's MAPICS, 505  
 National Services Division (NSD)  
 of, 495  
 Idle, 169  
 Implementation, 151  
 Improvement curves (see Learning  
 curve analysis)  
 Incentive pay systems vs. conventional,  
 321  
 Incremental expansion, 170  
 Independent demand, 82, 452  
 Indianapolis Police Department, 87  
 Individual characteristics, 437  
 Individual risk taking propensity, 509  
 Inequalities, 198  
 Information processing sequence  
 (MRP), 532  
 Initial solution, 198-199, 241-242  
 Initial Use Failures, 128  
 Innovation, 121  
 Input/Output control, 414-416, 433  
 Input/Output report, 436  
 Inspection, 649  
 critical ratio, 650  
 finished goods, 651  
 receiving, 649  
 work-in-process, 571, 650  
 Insufficient reason criterion, 34-35  
 Intangible output, 690  
 Integrated automation, 146  
 Intelligent Vehicle Highway Systems  
 (IVHS) program, 401  
 Interest tables (see Compound interest  
 factors)  
 Intermediate plan, 387  
 Intermittent operations systems, 252,  
 410  
 Intermittent scheduling, 411  
 Intermittent systems, 40  
 behavioral elements, 436  
 simulation of, 425  
 Internal failure, 603  
 Internal rate of return, 72  
 International:  
 competitive priorities, 55-56  
 Europe, 56-57  
 Japan, 56-57  
 International (continued)  
 level of GNP per capita, 55  
 major differences among Japan,  
 Europe and North America,  
 54-55  
 maquiladoras (Mexico), 60-61  
 North American, 56-57  
 International Association of Quality  
 Circles, 575  
 International business, 22, 24-25, 691  
 International competitive challenges:  
 in automobile market, 676-677  
 defined, 22, 24-25  
 production and operations  
 management, 54-58  
 quality management and, 618  
 International Data Corporation,  
 346-347  
 International productivity challenge,  
 54, 57-58  
 Interpret the solution, 197  
 Intuitive forecasting, 104-105  
 degree of noise, 104  
 individual variability, 104  
 individual vs. model performance,  
 104  
 as a judgmental process, 104  
 meaningfulness, 104  
 pattern complexity, 104  
 Inventory:  
 concepts, 452-461  
 concepts for the practitioner, 501  
 costs, 522  
 cost tradeoffs, 463-467  
 cycle, 470  
 defined, 452-453  
 fundamental reason for carrying,  
 454-455  
 managing, 168  
 operating doctrine, 457  
 in push vs. pull system, 576-578  
 return on investment, 454  
 turnover, 454  
 Inventory concepts, 452-461  
 Inventory control, 453  
 general guide for saving money, 502  
 Inventory control applications,  
 486-520  
 Inventory control fundamentals,  
 450-485  
 Inventory control procedures, 505  
 Inventory costs, 461-464  
 carrying, 462  
 cost of item, 462  
 procurement, 462  
 stockout, 462  
 tradeoffs, 463-467  
 Inventory modeling, 464-468  
 Inventory models:  
 deterministic, 464, 468-476  
 gradual replacement model,  
 473-475  
 leadtime in, 476

- Inventory models: (continued)  
 stochastic, 464, 490-500  
 Inventory model sensitivity, 471  
 Inventory planning system, 522  
 Inventory policy, 509  
 Inventory reduction, 524  
 Inventory status file, 524, 526  
 Inventory systems:  
 ABC classification in, 502-504  
 blanket rules in, 502  
 concepts concerning, 456-458  
 demand dependency and choice of,  
 522-523  
 elements of, 452-453  
 just-in-time (JIT), 562-563,  
 567-585 (see also Just-in-time  
 (JIT) manufacturing)  
 material requirements planning  
 (MRP) (see Material  
 requirements planning (MRP))  
 periodic, 460-461  
 quantity/reorder (Q/R), 459-460,  
 492  
 vs. periodic, 508  
 reactive vs. material requirements  
 planning, (MRP), 522  
 saving money in, 502-504  
 ISO-profit line, 196  
 Item level in product structure, 526  
 Items:  
 lower level, 526  
 upper level, 526  
 ITT, 566

## J

- Japan, postwar reindustrialization, 564,  
 609  
 Japanese:  
 approach to inventory management,  
 563  
 companywide quality control, 599  
 comparison of employment in 1980  
 and 2000, 564  
 drawbacks of management, 567  
 employee involvement, 566  
 historical and political perspective of  
 industry, 563  
 manufacturing, 562, 569  
 application to U.S., 583  
 manufacturing management, 565  
 role of government in business, 564  
 U-shaped layout, 277  
 work tradition, 226  
 Jidosha Kiki Company, Ltd., 573  
 Job analysis, 678  
 Job completion dates, 522  
 Job design, 292-301  
 behavioral dimensions, 297-301



- (continued)  
 engineering and  
 approaches, 302  
 standards, 301  
 operations standards, and  
 measurement, 290-331  
 heuristic methods, 296  
 engineering dimensions,  
 298  
 99  
 standards, 300  
 424  
 participation, 301  
 27, 230, 239, 399  
 0  
 gy, 151  
 (Standards)  
 ent processes through  
 5  
 action, 563, 567, 583  
 67  
 te, 567  
 ices, 582  
 e inappropriate, 583  
 578  
 -580  
 ver Company, 610  
 and Light, 466  
 2  
 riance, 305  
 ements, 154  
 46  
 s, 143  
 46  
 n, 291  
 3 (see also  
 d. 303  
 7, 230, 239  
 Labor utilization efficiency, 12  
 Laying off, 169  
 Layout, 252  
 Layout concepts, 252-256  
 Layout planning, 251-287  
 Layout(s):  
   basic designs, 252-256  
   behavioral aspects, 261-264, 271  
   cellular, 271, 274-277  
   characteristics, 253  
   combination, 255  
   defined, 252  
   fixed-position, 254-255  
   Japanese approach, 275, 277  
   models for, 256-261, 264-271,  
     275, 277, 578  
   process, 252, 264-271  
   process vs. cellular, 276-277  
 Lead time, 491-493 (see also  
   Inventory)  
 Lead time demand, 492  
 Lead time offsetting, (MRP), 532  
 Learning, rate of, 154  
 Learning curve, 153  
   sources of improvement, 155  
   uses, 157  
 Learning curve analysis, 153  
 Learning process, 682  
 Least slack rule (LS), 422  
 Level production, 385  
 Levi Strauss and Company, 145, 692  
 Life cycle, 171  
   process, 136  
   processing technology, 132-133  
   product, 119-123  
 Life of the asset:  
   accounting life, 66  
   economic life, 66  
   machine life, 66  
 Lifetime employment, 566-567  
 Line balancing problem, 270  
 Line-stop, 574  
 Linear costs, 395  
 Linear Decision Rules, 397-398  
 Linear programming: 172, 175,  
   192-210  
   in aggregate planning, 395  
   applied to product mix and capacity,  
     173  
   in capacity planning, 173-176  
   constraints, 192, 194  
   defined, 175  
   distribution method, 224-225,  
     240-250  
   feasibility area, 195-196, 242  
   graphical method, 193-198  
   objective function, 192, 194-195  
   restrictions, 192, 194  
   simplex method, 198-204, 224  
   slack variable, 198  
   transportation method, 224,  
     240-241, 250  
   variables in, 205  
 Linear regression, 100-102  
 Line balancing heuristics, longest  
   operation time (LOT), 271  
 Load-distance model, 256-259  
 Load profile, 430  
 Loading, 374-375, 414-416, 523  
   finite, 430, 432  
   finite vs. infinite, 432  
   infinite, 416, 418  
   simulation, 433  
 Location:  
   effects on costs and revenues, 214  
   of facilities, 211-212, 218  
   optimal, 223  
   planning, 218  
 Locational changes, reasons for, 215  
 London Business School, 41, 45  
 Lot sizing (MRP), 536-537  
   EOQ technique for, 536  
   holding costs, 536-537  
   lot-for-lot, 536  
   ordering costs, 536-537  
   part-period method, 536-537  
   setup cost, 536-537  
   Wagner-Whitin algorithm, 536  
 Lot splitting, 417  
 Lot tolerance percent defective, 652  
**M**  
 Machine groups, 141  
 McAuto's UNIGRAPHICS  
   CAD/CAM, 139  
 McDonald's, 95  
 McDonnell Douglas Corporation, 6,  
   79, 136  
 McDonnell Douglas Canada Ltd.,  
   372-373  
 Machine life, 66  
 Machine loading, 414  
 Maintenance, 169  
 Maintenance costs, 576  
 Malcolm Baldrige Quality Award,  
   604-605, 610  
   examination categories, 613-614  
   items, 614  
   point values, 614  
 Management:  
   behavioral schools, 11, 13  
   classical, 11, 12  
   process, 11, 12  
   role of in change, 685  
   schools of thought, 11-14  
 Management coefficient model,  
   397-398  
 Managerial behavior, 694  
 Managerial discretion, 437  
 Managerial style, 226  
   and quality control, 622  
 Managing for quality, 561, 595-627,  
   693  
 Managing operations in socialist  
   cultures, 24-25  
 Managing products and services, 598  
 Managing the project, 352-356  
 Manpower planning, 157  
 Manufacturing:  
   Europe, 56-57  
   Japan, 56-57, 561-562, 565  
   North America, 56-57  
 Manufacturing and services operations  
   types, 252  
 Manufacturing differences: Japan,  
   Europe, North America, 56-57  
 Manufacturing management, 8  
 Manufacturing operations vs. services  
   operations, 6-8  
 Manufacturing process, 227  
 Manufacturing process technology,  
   120, 130  
 MAPICS, 505, 519  
 Maquiladoras traffic, 58, 60-61  
 Marginal efficiency of capital curve,  
   454-455  
 Market Research, 171  
 Marketing, 168  
 Marriott, Inc., 411-413  
 Massachusetts Institute of Technology,  
   688  
 Master production schedule, 374-375,  
   389-390, 399, 411, 415,  
   522-524  
 Master scheduling, 389  
   implementation, 398  
 Material handling, 456  
 Material requirements planning (see  
   MRP)  
 Materials management, 545  
 Mathematical modeling, 11, 13-14  
   (see also Models)  
 Mathematical optimization, 192  
 Matrix organization, 355  
 Matsushita Corporation, 566  
 Maximization problems, 247  
 Maximax criterion, 34  
 Maximin criterion, 34  
 Mean Absolute Deviation (MAD), 83  
   (see also Forecast error)  
 Measurement of services, 608  
 Mechanization, 51  
 Median load, 222  
 Member needs, 437  
 Memorex Telex, 507  
 Mercedes-Benz, 676  
 Methods time measurement (MTM),  
   313  
 Metro Airlines, 377  
 Miller Brewing, 61  
 Milliken and Co., 604-605  
 Ministry of International Trade and  
   Industry (MITI), 564  
 Mixed strategy, 383  
 Modeling as management, 13  
 Modeling techniques, 164  
 Models, 16  
   aggregate planning, 171, 383-384,  
     395  
   assembly line, 171-181  
   benefits, 32  
   computer, 260-261, 266  
   heuristic, 32, 266  
   iconic, 31  
   load-distance, 256-259  
   location of facilities, 219-226  
   management coefficients, 397  
   mathematical, 11, 13, 31-32, 266,  
     689  
   in operations management, 13,  
     31-35, 690  
   optimization, 32  
   process layout, 256-261  
   product layout, 264-271  
   project scheduling, 334-351  
   schematic, 31  
   search procedures in aggregate  
     planning, 397  
   selection, 181  
   simple median, 220-223  
   simulation, 176-178, 226,  
     425-426, 435, 492  
   verbal, 31  
 Modular design, 130, 151, 582  
 Monsanto Chemical Company, 628  
 Monte Carlo method, 425  
 Morale, 399  
 Motion economy principles, 295-296  
 Motivation, 399  
   in job performance, 437  
   in project environments, 356  
 Motorola, Inc., 605  
 MRP (material requirements  
   planning), 374-375, 415, 521,  
   523, 567  
   action bucket, 533  
   allocated, 529  
   available, 529  
   benefits, 542  
   bill of materials, 532  
   capacity requirements, 537  
   closed loop, 543  
   computational procedure, 528  
   cycle counting, 534  
   detailed capacity planning, 537  
   dynamic nature, 541  
   firm planned orders, 536  
   gross requirements, 529  
   information processing sequence,  
     532  
   level code, 533  
   limitations and advantages, 541  
   logic, lot sizing, 536-537  
   methods, 524  
   net change system, 535  
   net requirements, 528-529  
   objectives, 524  
   operation setback chart, 537, 540  
   pegging, 533  
 MRP (continued)  
   planned order receipt, 528-529  
   planned order release, 528-529  
   processing logic, 526  
   product explosion, 532  
   product structure, 529  
   purchasing, 545  
   purchasing objectives, 545  
   record, 540  
   regenerative system, 534  
   rough-cut capacity planning, 537  
   scheduled receipts, 528-529  
   system, 525  
   system components, 524  
   system nervousness, 535  
   time fence, 535  
 MRP II, 542, 547  
 Multi-echelon inventories, 456  
 Multinational locational decisions,  
   226-227  
 Multistage inventories, 456  
**N**  
 N-2 technique, 574  
 National Association of Suggestion  
   Systems, 15  
 National Industrial Conference Board,  
   218  
 Needs identification, 123, 126  
 Net change system, 534  
 Net present value, 69-72  
 Network modeling, 336  
 New United Motors Manufacturing  
   Inc., 582  
 Next best rule (NB), 427  
 Nissan, 617  
 Node, 336  
 Noise, 81  
 Nominal group forecasting technique  
   (see Forecasting techniques)  
 Normal distribution (see Standard  
   normal distribution table)  
 Nutri/System, 145  
**O**  
 Objective function, linear  
   programming, 192, 194-195  
 Objectives (see Goals)  
 Occupational Safety and Health Act  
   (OSHA), 297  
 OC curve, 653-654  
 Office automation, 146-151  
 Office of the Under Secretary of  
   Defense, 672  
 Ohio Edison Co., 310  
 Omark, 585  
 Open order, 416



- 430  
 ng, 619  
 istics curve,  
 5  
 92  
 0  
 tradeoffs, 20-21  
 5-8  
 -21  
 Operations  
 y, 162, 165 (*see also*  
 ment, 2-30  
 26, 694  
 73  
 6, 671, 690  
 ry, 9  
 -25, 54-62,  
 27 (*see also*  
 nagement)  
 ment Association  
 :  
 es, 19-20  
 g and scheduling  
 -374, 523  
 ng, 409  
 , 417  
 s, 18-19,  
 , 681  
 ative, 681  
 81  
 nt, 44-45  
 m, 9-14  
 4, 9-10  
 5  
 7  
 ertative, 247  
 ing, 395-397  
 g, 195  
 83-484  
 ventory control,  
 n Technology  
 436  
 le lot size
- Organization, 291  
 Organizational change (*see* Change)  
 Organizational climate, 399  
 Organizational structure, 123, 226,  
 437  
 locational effects, 678  
 Organization development, 684  
 Organizing, 12-15  
 Organizing for quality, 606-608  
 Origin of new products, 119  
 OSHA, 297  
 Otis Engineering, 140-141  
 Output planning, 374, 523  
 Output rate, 384, 386  
 Overtime, 169
- P**  
 P chart (*see* Fraction defective chart)  
 Pacific Basin, 55  
 Pacific Gas and Electric, 338-339  
 Parameter estimation, 158  
 Parametric production planning, 398  
 Pareto analysis, 609  
 Parke-Davis, 545  
 Partial derivatives, 484  
 Partial factor productivity, 46  
 Payback methods, 68  
 Peer group influences, 684  
 People's Republic of China, 58  
 Percent defective, 650  
 Periodic inventory system, 460  
 Perishable products, 498  
 Perishable services, 499  
 PERT, 336-337, 340-351  
 activity, 340  
 application, 337-338  
 comparing S. Korea and United  
 States, 356  
 critical path, 337, 340  
 development, 336-337  
 dummy activity, 340  
 earliest beginning time, 340  
 event, 340  
 event slack, 341  
 expected beginning time, 340  
 expected completion time, 340  
 expected time of an activity, 340  
 glossary, 340  
 language, 337  
 latest beginning time, 340  
 limited resources, 351  
 logic of, 337  
 most likely time, 340  
 network, 340  
 optimistic time, 340  
 parallel paths,  
 path, 340  
 path time, 340  
 pessimistic time, 340

- PERT (continued)  
 probabilistic, 349-351  
 selecting a personal computer  
 package, 346-347  
 slack time, 341  
 time/cost tradeoffs, 348-349  
 Physical distribution, 545  
 Physical proximity, 437  
 Plan process chart, 295  
 Planned change in products and  
 processes, 674  
 Planned order, 416, 430  
 Planned order receipts, 526  
 Planned order release, 526  
 Planning, 12, 15  
 aggregate, 372, 415 (*see also*  
 Aggregate planning)  
 aggregate capacity, 374  
 aggregate output, 374  
 capacity (*see* Capacity planning)  
 and control, 374  
 layout, 251-287  
 location (*see* Facility location  
 planning)  
 long-range, 171  
 for materials needs, 522  
 output, 374  
 time horizon, 380  
 Planning and control, push vs. pull,  
 576-577  
 Planning and controlling the project,  
 352-354  
 Planning the conversion system, 119  
 Planning horizon, 173  
 Plant, *maquiladoras*, 60-61  
 Poisson distribution, 658  
 Poisson population, 655  
 Poke a yoke, 574  
 Pratt and Whitney, 125  
 Preautomation, 582  
 Predecessor task, 271  
 Predetermined time study, 313  
 Prediction, 78  
 Preliminary screening, 218  
 Prentice Hall, 332-333  
 Present value, 69-70, 171  
 Preventative maintenance, 583  
 Prevention costs, 603  
 Prices and value, 548  
 Principles of motion economy (*see*  
 Motion economy principles)  
 Priority sequencing, 414, 421  
 criteria, 421  
 rule, 421  
 Probabilistic PERT, 349-351  
 Probability, 179  
 Problem-solving skills, 578  
 Process:  
 capability, 629, 633-634  
 conforming, 633  
 nonconforming, 633  
 chronic condition, 633

- Process: (continued)  
 life cycle, 133-134  
 technology, 120, 130, 151, 168  
 Process capability, 597  
 Process design, 118, 169  
 Process development (new), 124  
 Process distribution, 636  
 Process flows, ways to organize,  
 131-132  
 Process layout, 252-253, 276 (*see also*  
 Layouts)  
 behavior, 261  
 models, 256-261  
 Process management, 12  
 Process school of management, 11, 12  
 Process structure, 134  
 Process technology, 130  
 characteristics, 131  
 life cycle, 132  
 Process variation, 629  
 Producer's risk, 639, 652-653  
 Product:  
 concepts, 126  
 life cycle, 151, 168  
 Product characteristics, 597  
 Product design, 118-119, 525, 600  
 Product development, 119, 168 (*see*  
 also Product design)  
 new, 124  
 process, 123  
 Product evaluation and improvement,  
 123, 126  
 Product explosion, 532  
 Product failure curve, 128  
 Product groups, 373  
 Product use and support, 123, 126  
 Production and operations standards,  
 303-306  
 Production and services, aggregate  
 planning for, 372  
 Production function, 5-6  
 Production lead times, 522  
 Production management, 8 (*see also*  
 Operations management;  
 Production/operations  
 management)  
 Production/operations, changes, 679  
 Production/operations management:  
 activities, 689  
 careers, 22-26, 694  
 dynamics of, 673  
 general model, 671  
 overview of, 689  
 role of managers, 694  
 trends, 689  
 Production planning, 372, 411 (*see also*  
 Aggregate planning)  
 Production process design and  
 development, 123, 127  
 Production scheduling, 371, 686  
 Production smoothing, 388, 456 (*see*  
 also Aggregate planning)
- Production standards, 303-306 (*see*  
 also Standards)  
 Productivity, 46-50, 137  
 defined, 46  
 gain sharing, 320  
 improvement, TRW, 52-53  
 labor, 46  
 levels, 46  
 partial factor, 46  
 and quality, 46-50  
 total factor, 46-47  
 trends, 47  
 in U.S. compared to Japan and  
 other countries, 3, 54-58  
 Product layout, 254 (*see also* Layout)  
 assembly line models and behavior,  
 264-273  
 Product life cycle, 119-120, 134  
 Product mix problem, 174  
 Product-process matrix, 134  
 Product-process mix, 133  
 Product quality, 596-597, 674  
 Product reliability, 126, 151  
 Product standardization, 130  
 Product structure, 134, 525  
 Productivity, 437  
 Professional service technology, 151  
 Program evaluation and review  
 technique (PERT), 336-337,  
 340-351  
 Progress reporting, 354  
 Project, 131, 333  
 Project behaviors, 356-357  
 communication, 356  
 group cohesiveness, 357  
 motivation, 356  
 Project management, 333-369,  
 352-356  
 behaviors, 355  
 Project organization advantages and  
 disadvantages, 357  
 Project planning, 333  
 Project planning and scheduling, 333  
 Project progress reporting, 354  
 Project scheduling, 333  
 Project scheduling models, 334  
 Project technology, 131, 151  
 Prototype, 126  
 Proximity to customers, 228  
 Pull system, 576-577  
 Punishment, 682  
 Purchasing, 399, 545, 586  
 administration, 545, 548  
 comparative analysis, JIT and U.S.,  
 586  
 evaluating supplier, 586  
 JIT, 586  
 negotiating and bidding process,  
 586  
 product specification, 586  
 purchase lot size, 586  
 requirements, 545

- Purchasing (continued)  
 selecting supplier, 586  
 Pure strategies in aggregate planning,  
 382  
 Purolator Courier, 378  
 Push system, 576-577
- Q**  
 Q/R inventory system, 457-460, 492,  
 508  
 QSOM (Quantitative Systems for  
 Operations Management)  
 software, 115, 161, 201-205,  
 209-210, 239, 669  
 Quaker Oats Co., 23, 262-263  
 Quality, 19, 42, 47-50  
 analysis, 603  
 analysis and control, 628  
 clarifying the theme, 600  
 control charts, 635, 645  
 for attributes, 643  
 constructing, 640  
 evidence for investigation, 648  
 interpreting, 642  
 for range, 642  
 software, 648  
 steps in developing, 636  
 updating, 637  
 for variables, 641  
 control limits, 635  
 design, 576  
 Japanese manufacturing, 570  
 management-directed diagnosis for,  
 603  
 management-initiated approaches  
 and actions to improve, 610  
 motivation, 619  
 organizing for, 571  
 policies, 655  
 popular concepts, 596  
 Quality circles, 574, 620-621  
 effectiveness and evaluations, 622  
 Quality control, charts, 561  
 Quality control, Taguchi method, 575  
 Quality cost studies, 606  
 Quality indicators, 608  
 Quality loss function (QLF), 575  
 Quality productivity ratios, 608  
 Quality-productivity strategy, 48-50  
 Quality/quantity tradeoffs, 618-619  
 Quantity discount inventory model (*see*  
 Inventory models,  
 deterministic)  
 Quantity discounts, 487 (*see also*  
 Inventory models,  
 deterministic)  
 Quantity/reorder inventory system (*see*  
 Q/R inventory system)



g, 46, 143  
g technology, 143,  
4  
01  
s, 6  
aking, 508  
control systems,  
2  
achievements, 609  
e, 581  
100-102  
rewards, 679, 682  
dules, 682  
es (see Location)  
uring, 576  
pment (R&D),  
1, 373  
02  
2  
ocation, 214  
1  
37  
lanning,  
9-390, 415, 523,  
9  
Products Division,  
Service vs. product dominance, 142  
Setup dependence, 426  
Shingo, 569, 582, 593  
Shingo's Seven Wastes, 568  
Shop floor control, 374-375, 412, 415  
Shop loading, 414  
Shortest processing time (SPT),  
422-423 (see also Intermittent  
systems)  
Simple lot size formula, 468  
Simple median model, 220-221, 239  
Simplex method, 198

Simulation:  
in capacity planning, 176-178  
computer, 172, 176, 688  
of intermittent systems, 425-426  
location of facilities, 226  
results for job-flow time, 425  
Single sampling, 651  
Slack, 341 (see PERT, slack)  
Slacktime, 422  
Slack variable, 198  
Small Business Administration, 218  
Smoothed mean absolute deviation, 83  
Smoothing coefficient selection, 95-97  
Social needs, 437  
Social system, 11, 13  
Socialist economy transitions, 22  
Solution space, 194  
Sources of information, 218  
Southern Co., 466-467  
Space Parts Inventory, 494  
Specialization of labor, 292  
Specification limits, 632  
lower, 632  
upper, 632  
Sperry, 584  
Sporadic problems, 606, 632  
SQC pack, 648  
SQC for services, 649  
St. Louis County Police Department,  
164  
Standard, 303  
Standard cost, 305  
Standard deviation, 631, 636  
Standard normal distribution table,  
698  
Standardization, 130, 582  
Standards:  
departmental, 304  
formal and informal, 306  
individual job, 303  
plant, 304-305  
production, 303  
time, 303, 305-306, 308-316  
uses, 305-306  
Standard usage, 305  
Staples, 216  
Statistical process control, 634, 660  
Statistical quality control, 646  
Stepping stone procedure, 242, 250  
Stochastic inventory models, 490-500  
Stockless/just-in-time production, 570  
Stockless production, 570  
Stockout costs, 462-502  
Strategic planning, 40-45, 689 (see  
also Operations, strategic role)  
approaches, 40  
defined, 40  
forced choice model, 40-41  
models, 40  
operations model, 41-45  
for production and operations,  
40-45  
Strategies for behavioral change, 681

Strategy and operations, 38-64  
Strategy and quality, 599  
Strategy perspective, 18-19  
Subcontracting, 169  
Subculture, 239  
Sunk costs, 65  
Sun Micro-Systems, 269  
Surplus variables, 205  
Survey research technique, 219  
System, organization, 437  
System dynamics, 688  
Systems theory, 11, 13

## I

Taiwan, 58  
Tampa Electric, 466  
Tandy, 656  
Tardiness, 227, 230  
Target specification, 576  
Task, 291  
sharing, 273  
Technology (see also Automation)  
assembly-line, 132  
bar-code, 506-507, 693  
batch, 132  
continuous, 132  
of conversion, 6  
custom-shop service, 146-147  
group, 141, 271  
and improved scheduling for  
deliveries, 400-401  
job-shop, 132  
manufacturing process, 130-133  
mass service, 146-147  
and mechanization, 50-51  
optimal production, 433-436  
professional service, 146-147  
project, 131  
quasi-manufacturing, 146-147  
service process, 143, 146-148  
Template, 256  
Tenneco, 145  
Tennessee Valley Authority, 467  
Testing, 122  
Thaw-move-refreeze model, 680  
The Mennen Company, 99  
Theory Z, 565  
The Prime-Move Company, 486  
3M Co., 45, 290-291  
Time-based competition, 19  
Time horizon, 380  
Time-phasing products, 174  
Time series analysis, 81-82  
Time standard, 303  
Time study, 309, 312-314  
direct, 312-314  
predetermined, 313-314  
Time value of money, 66  
Total completion time, 423

Total factor productivity, 46  
Total quality control, 563, 570, 583,  
615  
Deming's contribution to, 571  
Toyota Motor Co., 568-569, 572,  
582, 610, 616-618, 677  
Toys R Us, 216  
Transformation process (see Conversion  
process)  
Transportation matrix, 241  
Transportation method of linear  
programming, 224, 240-241,  
250 (see also Linear  
programming)  
Tree diagramming, 177-178  
Tri-Con Industries, Ltd., 562-563  
Truncated  
shortest-processing-time-rule  
(TSPT), 422  
Truncation time, 422  
TRW, 52  
Type I error, 639  
Type II error, 639

## J

U-shape, 277, 578  
Uncertainty, 33-35  
University of Michigan, 45, 401  
University of Michigan Transportation  
Research Institute, 401  
University of Minnesota, 542  
University of Missouri, Columbia, 25,  
317  
Elmer Ellis Library, 294  
US Air, 377  
U.S. Army, 434-435  
U.S./Canada Free-Trade Agreement,  
228-229  
U.S. Postal Service, 400  
Useful performance life, 128

## V

Val Mode Lingerie, 507  
Value-added manufacturing, 568  
Value system, 227, 239  
Variable characteristic, 634  
Variable costs, effects of location, 214  
Variable demand, 490-491  
Variable demand lead time and  
demand during lead time,  
490-493, 497  
Variable measurement, 634  
Variation:  
natural, 629, 632  
nonrandom, 634  
process, 629

Variation: (continued)  
sources, 629  
sporadic, 634  
unit-to-unit, 632  
Visible control, 574  
Visual inspection, 644  
Visual load profile, 416-417  
Volvo, 300

## W

Wagner Whitin algorithm, 536  
Wall Street Journal, 218  
Wang Laboratories, Inc., 98  
Warner-Lambert, 546  
Watervliet Arsenal, 434  
Wear-out failures, 128  
Weight Watchers, 145  
Wells Fargo Bank, 656  
Western Hemisphere, 55  
Westinghouse Electric, 49, 140, 269,  
583, 605, 610  
Williams-Steiger Safety and Health  
Act of 1970, 297  
Wilson Formula, 468  
Woolworth Holdings PLC, 311  
Work breakdown structure, 352  
Work Center, 253  
Worker physiology, 295  
Work flow analysis, 525  
Work force utilization, 169  
Work force variations in aggregate  
planning, 399  
Work measurement, 307-320  
current usage, 317, 320  
defined, 307  
for white collar workers, 316-317  
Work measurement techniques,  
computerized offices, 318  
Work methods, 678  
Work methods analysis aids, 292  
Workplace layout, 578  
Work sampling, 314-316  
Working environment, 296-297  
World class competition, 561

## X

X chart, 635, 638, 640  
Xerox Corporation, 262-263, 610,  
617-618

## Z

Zero defects programs, 619  
Zetaco, 172



# PRODUCTION AND OPERATIONS MANAGEMENT

## Concepts, Models, and Behavior

FIFTH EDITION

by  
EVERETT E. ADAM, Jr.

and  
RONALD J. EBERT

This comprehensive text retains the core concepts, models and managerial orientation of previous editions and reflects current production and operations management practices and research results. It emphasizes practice through new chapter highlights. The text continues to offer problems which can be solved by the computer.

### *Distinctive Features*

- Increased coverage of international and service operations management.
- A new chapter "Japanese Contribution to World Class Manufacturing" has been included.
- Each chapter opens with a specially prepared executive comments on the topic of the chapter from a CEO (Chief Operating Officer) of a major service or manufacturing operation.
- To assist student understanding the authors have provided end-of-chapter materials designed to reinforce the essentials of each chapter: solved problems, revised review questions and cases, and computer-assisted learning.

₹ 495.00

[www.phindia.com](http://www.phindia.com)

